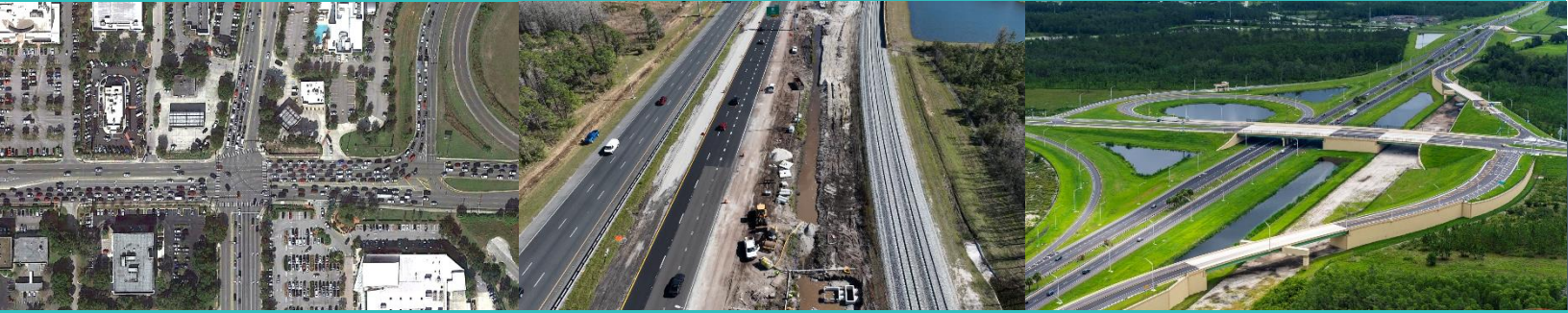




Practice Area

ROADWAY CAPACITY

THE KNOWLEDGE YOU NEED, THE INTEGRITY YOU TRUST™



SERVICES

- Arterial and Limited Access Widening
- Intersection Improvements
- Complex Temporary Traffic Control
- Stormwater Management and Permitting
- Expertise in 3D Modeling

IMPLEMENTATION

SR 528 Innovation Way
Interchange, Orange County
SR 417 TO WB SR 528



Sherman Klaus, P.E. is a professional engineer and expert in transportation capacity with extensive experience in management and design of transportation projects for urban, rural, and limited access facilities. He brings 29 years of experience and is the Director of Transportation at TBG. Sherman is also experienced in utility coordination and spent two years in construction inspection/administration. Sherman spent the first six years of his career in the state of Washington before moving to the sunny climes of Florida in 2001. sklaus@balmoralgroup.us



Byron Sprague, P.E. is supporting Sherman with Capacity projects he is detailed and efficient which makes him highly proficient in plans production and digital delivery, and he has extensive experience in specifications package preparation and cost estimating.



Arban Gjonbibaj, P.E. a Multi-Faceted Engineer with a focus on roadway, drainage, signing and pavement marking design. His experience includes projects for the FDOT, CFX, JTA and clients and municipalities affecting FDOT facilities Districts Four, Five and Six. Arban is knowledgeable in Florida and Federal reference manuals, and design standards.

TBG DIFFERENCE

- Capacity improvement projects completed for FDOT Districts 1, 2, 3, 5, CFX, Orange County-